



Beaufort County Public Works
Stormwater Infrastructure
Project Summary

Project Summary: Hodge Drive / Roseida Road Outfall

Project #: 2004-80 Completed: Apr-10

Narrative Description of Project:
 Project improved 650 L.F. of drainage system. Removed debris from flowline by hand. Cleaned out 650 L.F. of outfall ditch. Jetted (1) crossline pipe. Handseeded for erosion control.

Material Cost, Rental Equipment Summary, and Labor

Material	Unit	Cost/Unit	Qty	Cost
Pin Flags	each	\$0.06	9.0	\$0.54
Annual Rye Grass Seed	bag	\$19.21	1.0	\$19.21
Water	gallon	\$0.01	1,200	\$12.00
Gas	gallon	\$2.67	34.0	\$90.78
Diesel	gallon	\$2.70	71.0	\$191.70
Labor	hours		169.0	\$6,149.69
Total Cost of Materials, Rental Equip., and Labor				\$6,463.92

Note: Labor cost includes the employee's salary plus fringe benefits.

Equipment Cost

Item	Asset	Cost/Hour	Hrs.	Cost
JCB Urban Excavator	23364	\$40.53	3.0	\$121.59
JCB Backhoe	22810	\$36.50	10.0	\$365.00
Bobcat T300	22847	\$20.10	2.0	\$40.20
Vacuum Truck	22812	\$20.30	5.0	\$101.50
Dump Truck	23105	\$16.68	8.0	\$133.44
Pickup Truck		\$4.17	71.5	\$298.16
Total Equipment Cost				\$1,059.89

Cost/hour excludes fuel cost. \$7,523.81

Site Photographs

Before

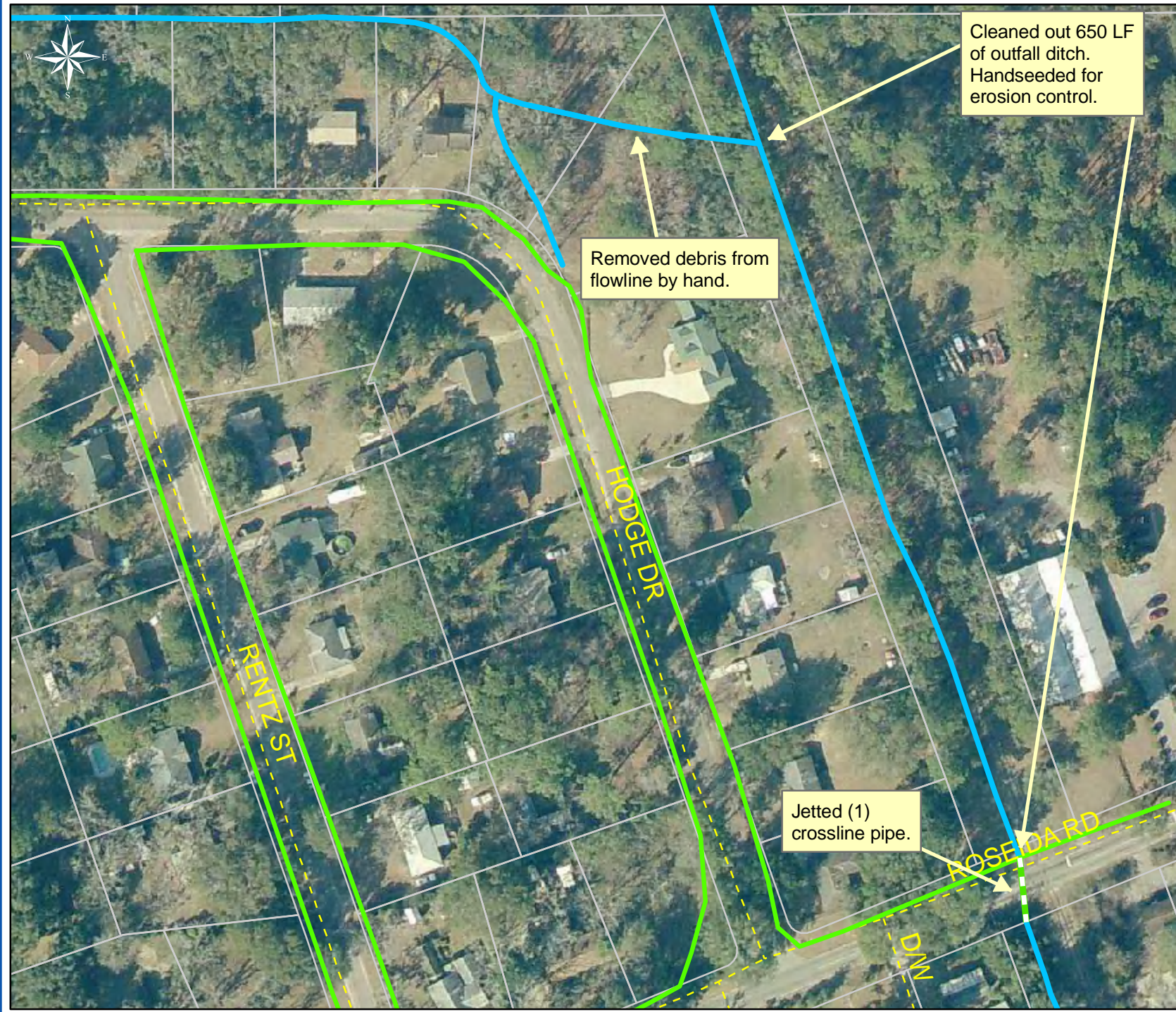


During



After





Project: Hodge Drive/Roseida Road Outfall

Activity: Drainage Maintenance (Emergency)

Project #: 2004-080

Township: Port Royal Island

Completed: April 2010

Legend	
Drainage Type	
	River
	Stream
	Outfall
	Lateral
	Roadside
	Roadside Pipe
	Crossline
	D/W
	Access
	Piped
	Bleeder
	Parcels



1 inch equals 119.32 feet